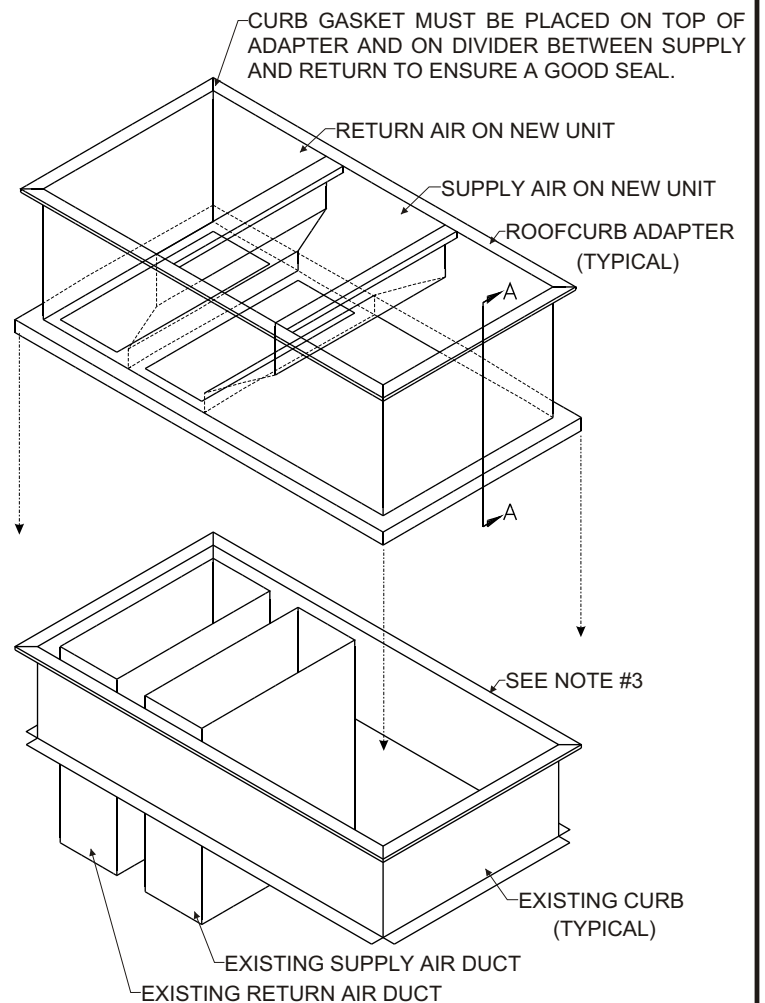


THIS ADAPTER SPEC IS FOR REPRESENTATION ONLY, ACTUAL ADAPTER WILL VARY BY DESIGN. THIS IS FOR GENERAL ADAPTER INSTALLATION.

1. Shut off and disconnect all gas and electrical connections to the existing rooftop unit. Making sure duct is not connected to unit.
2. Remove existing unit being careful not to damage the roof curb or the existing duct work.
3. Remove all gasketing from existing roof curb and duct work and replace with new gasketing supplied with adapter. Gasket entire roof curb perimeter and supply/return perimeters to ensure a good tight fit with no air leakage.
4. If separate support channels are included with adapter, hang these channels on the existing roofcurb flush with top of curb evenly spaced, to support tech when servicing the unit.
5. Carefully set adapter on existing roofcurb being sure that the supply & return duct transitions line up with existing supply and return is not set backward.
6. Gasket entire adapter perimeter and supply/return perimeters with adhesive backed gasket, to ensure a good fit between adapter and unit.
7. Set new unit gently on adapter, ensuring supply and return on unit match supply and return on adapter.
8. Connect all electrical and gas lines to new rooftop unit per manufacturer's recommended instructions.
9. Maintain your adapter by painting the welded areas once a year to avoid rust.

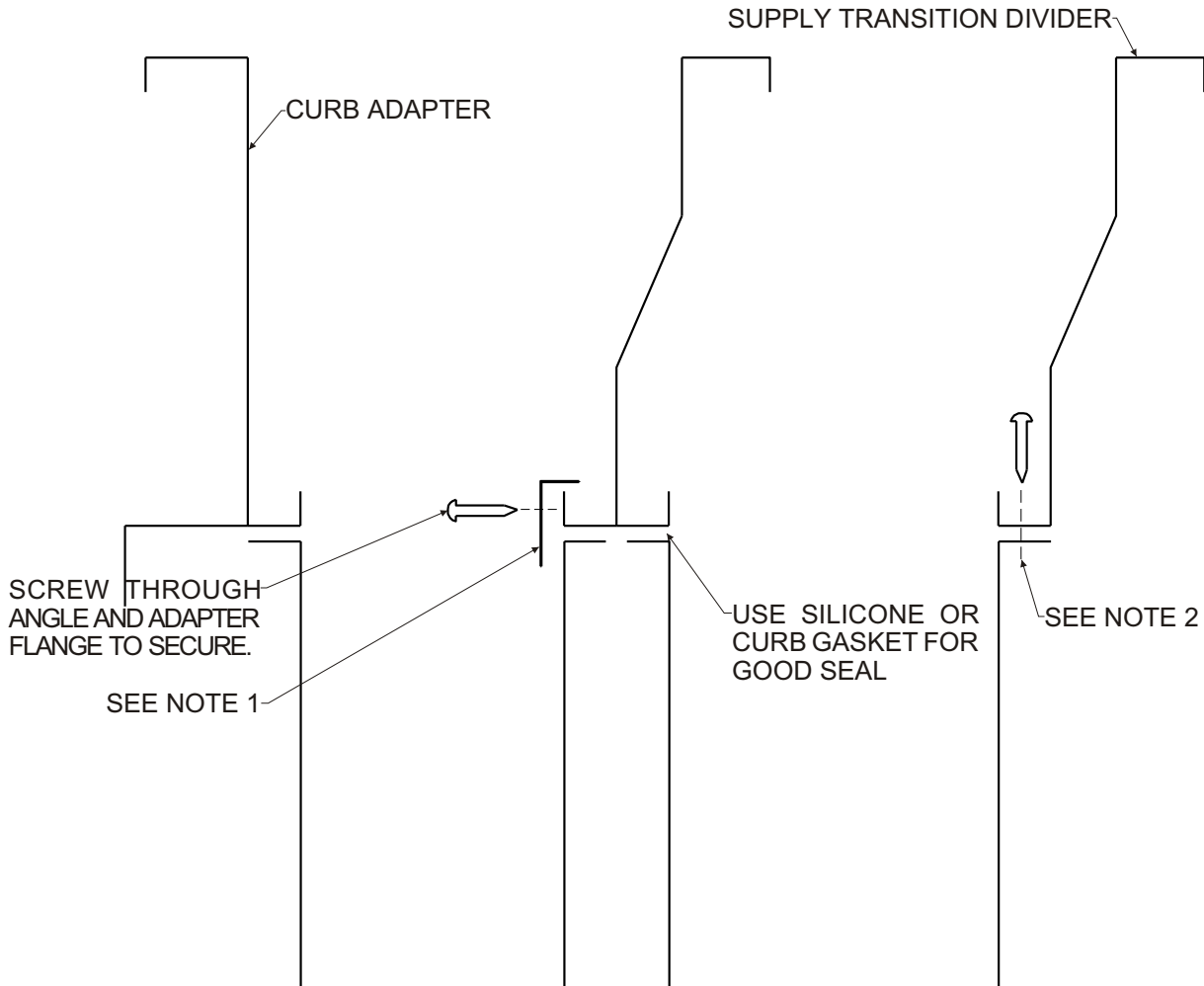


Optional instructions.

1. Secure adapter to existing curb, spacing appropriate fasteners a maximum of 12" O.C. through adapters 2" counterflashing.
2. Secure new rooftop unit to adapter per unit manufacturer's installation instructions.

SECTION A-A

1. ALL SCREWS AND SHEET METAL ANGLES ARE FIELD SUPPLIED.



NOTE 1:
SHEET METAL ANGLE TO HELP SEAL SUPPLY AND RETURN AIR SPECIFICALLY SUPPLY. SEE NOTE 2 IF DUCT HAS FLANGE TURNED OUT. (ANGLE FIELD SUPPLIED)

NOTE 2:
CAN BE SCREWED FROM TOP THROUGH EXISTING DUCT FLANGE. SEE NOTE 1 IF DUCT HAS RAW EDGE. (SCREWS FIELD SUPPLIED)

THE INFORMATION CONTAINED HEREIN IS A RECOMMENDATION ONLY. THE END INSTALLER IS SOLELY RESPONSIBLE FOR ENSURING THE UNIT IS ANCHORED PROPERLY TO MEET GENERAL COMPLIANCE CODES.