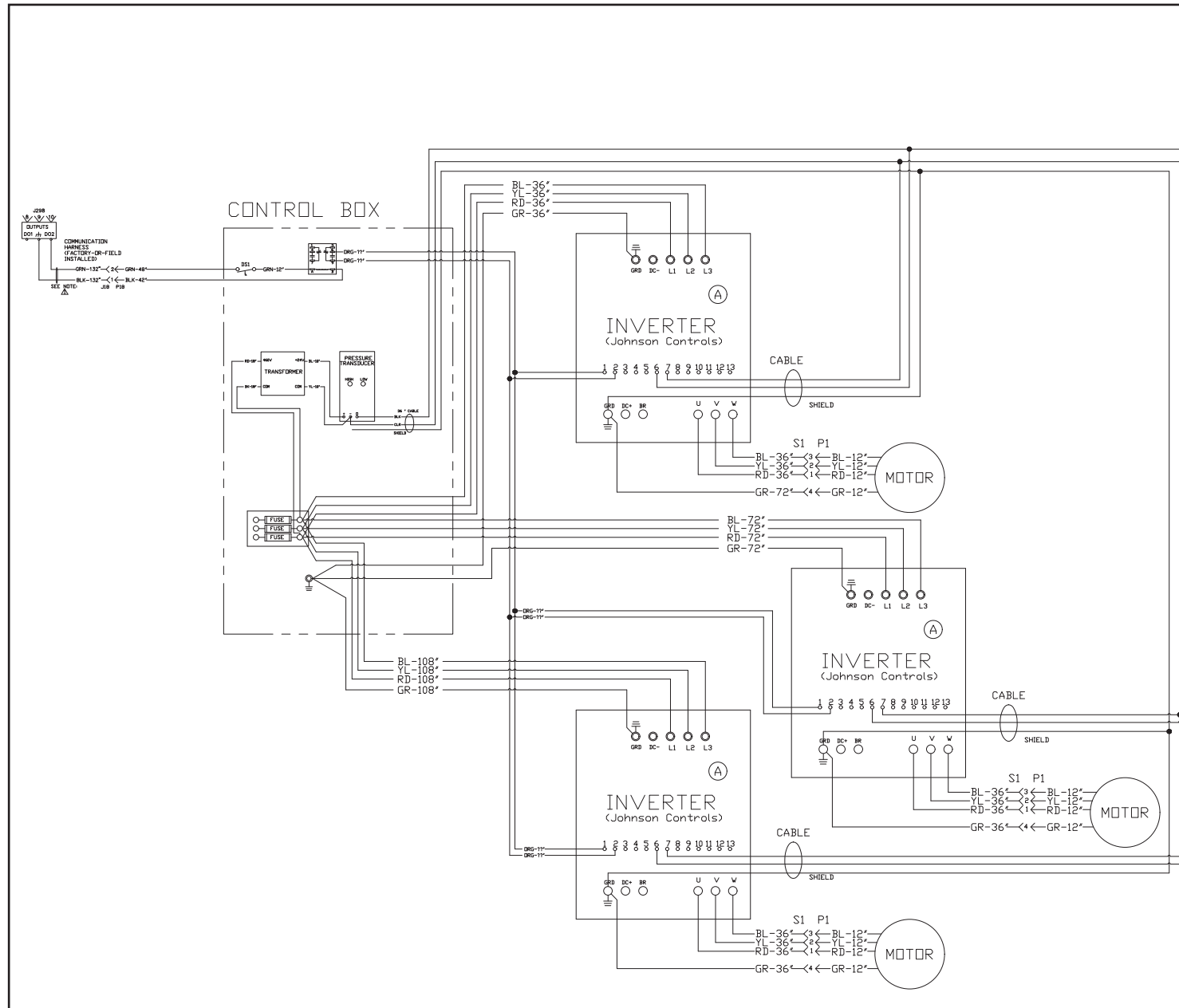


| MATERIALS LIST | | | |
|----------------|------|-----------|---------------------------------|
| QTY | | RSI PART# | DESCRIPTION |
| -23 | -33 | | |
| 18" | 18" | 300000091 | Wire 18 Ga. Red |
| 192" | 192" | 300000093 | Wire 18 Ga. Green |
| 360" | 360" | 300000103 | Wire 14 Ga. Red |
| 360" | 360" | 300000105 | Wire 14 Ga. Yellow |
| 360" | 360" | 300000106 | Wire 14 Ga. Blue |
| 360" | 360" | 300000107 | Wire 14 Ga. Green |
| 9' | 9' | 300000116 | Cable - Shielded |
| 1 | 1 | 300000133 | Switch - Interlock |
| 1 | 1 | 300000153 | Fuse Holder |
| - | 3 | 300000157 | Fuse 10 AMP |
| 3 | - | 300000160 | Fuse 20 AMP |
| 1 | 1 | 300000178 | Relay - 24 Volt DPDT |
| 1 | 1 | 300000196 | Transformer |
| 1 | 1 | 300000256 | Pressure Transducer |
| 1 | 1 | 300000259 | Probe - Static Pressure |
| 1 | 1 | 300000291 | AMP 2 Cir Cap Conn. Female |
| 1 | 1 | 300000292 | AMP 2 Cir Plug Conn. Male |
| 1 | 1 | 300000303 | Lug - Ground |
| 3 | 3 | 300000329 | Blower - A12 x 12A Belt |
| 7 | 7 | 300000585 | Female 1/4" Quick Disc. (Insul) |
| 4 | 4 | 300000586 | Female 1/4" Quick Disc. (Red) |
| 12 | 12 | 300000588 | Spade - 16/14 Ga. Wire |
| 2' | 2' | 300000998 | Tape - Electrical |
| - | 3 | 300001217 | Inverter |
| 3 | - | 300001259 | Inverter |
| 192" | 192" | 30018319 | Wire 18 Ga. Black |
| 10" | 10" | 30018420 | Wire 18 Ga. Blue |
| 216" | 216" | 30018622 | Wire 18 Ga. Orange |
| 10" | 10" | 30018718 | Wire 18 Ga. Yellow |
| 8 | 8 | 30303598 | Ring Grd. |
| 3 | 3 | 30303906 | AMP 4 Cir Plug Conn. Male |
| 3 | 3 | 30303907 | AMP 4 Cir Cap Conn. Female |
| 14 | 14 | 30303912 | AMP Pin Contact Male |
| 14 | 14 | 30303913 | AMP Socket Contact Female |
| 30 | 30 | 380431695 | Wire Ties - 3 3/4" L |
| 3 | 3 | 410430024 | V-Belt - 50" |
| 3 | 3 | 610431671 | Motor - 1 1/2 HP 1725 RPM |
| 3 | 3 | 700000037 | Pulley - 10" Dia. x 1" Bore |
| 3 | 3 | 700000050 | Pulley - 4.15" Dia. x 5/8" Bore |



| Revision | Change | Date |
|----------|--------|------|
| | | |
| | | |
| | | |
| | | |
| | | |
| | | |
| | | |
| | | |
| | | |
| | | |

WIRE COLOR CODE

| | |
|--------|--------|
| BK/BLK | Black |
| BL | Blue |
| BR | Brown |
| GR/GRN | Green |
| OR/ORG | Orange |
| RD | Red |
| VI | Violet |
| WT | White |
| YL | Yellow |

COMPONENT CODE

| | |
|-----|---------------------------|
| DS1 | Door Switch |
| GRD | Ground |
| J18 | Communication Jack Female |
| P1 | Fan Plug Male |
| P18 | Communication Plug Male |
| S1 | Control Box Female |

CONNECTOR & CONTACT CONFIGURATION

| | | | | |
|-----|------|-----------|--------|----------|
| J18 | CAP | 300000292 | SOCKET | 30303913 |
| P1 | PLUG | 30303906 | PIN | 30303912 |
| P18 | PLUG | 300000291 | PIN | 30303912 |
| S1 | CAP | 30303907 | SOCKET | 30303913 |

HARNESS LEADS ARE 14 GA. WIRE WITH NO END DESIGNATION



1625 Diplomat Drive
Carrollton, Texas 75006
Phone (972) 247-7447
Fax (972) 243-0940

Power Exhaust for
LGH / LCH 242, 300H, 360 Units

Date: April 25, 2018

Supersedes:

Drawn by:

Unit #: 50-457-53xA-23/-33

Diagram#: 5045753AW

Approved by: