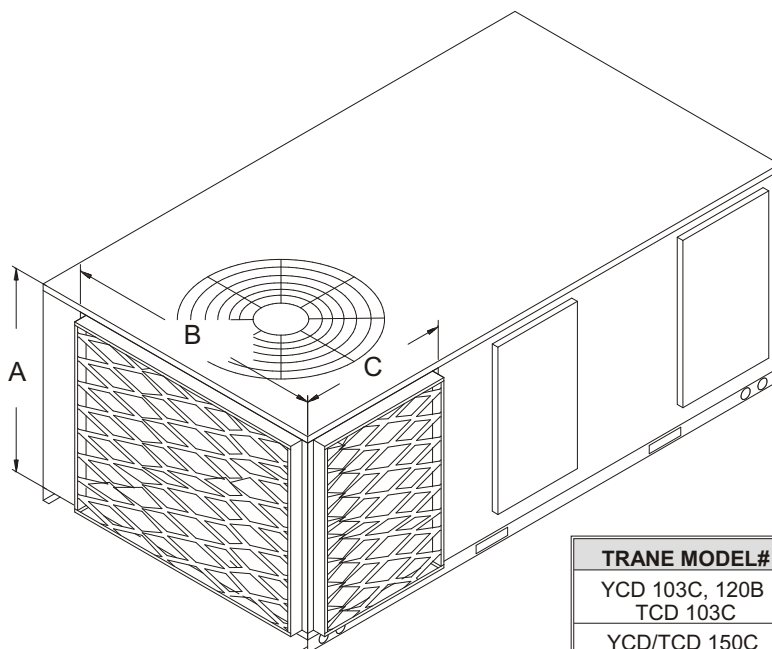


SPECIFICATION DATA FOR TRANE YCD 103C, 120B, 150C / TCD 103C, 150C WCD 120B UNITS



RSI MODEL#: 70-801-09 COIL GUARD

The RSI Coil Guard is made of 18 gauge expanded steel with a 2 inch extended painted frame. Mounting hardware is field provided.

Notes:

1. **Caution when installing be sure not to puncture condenser coil.**

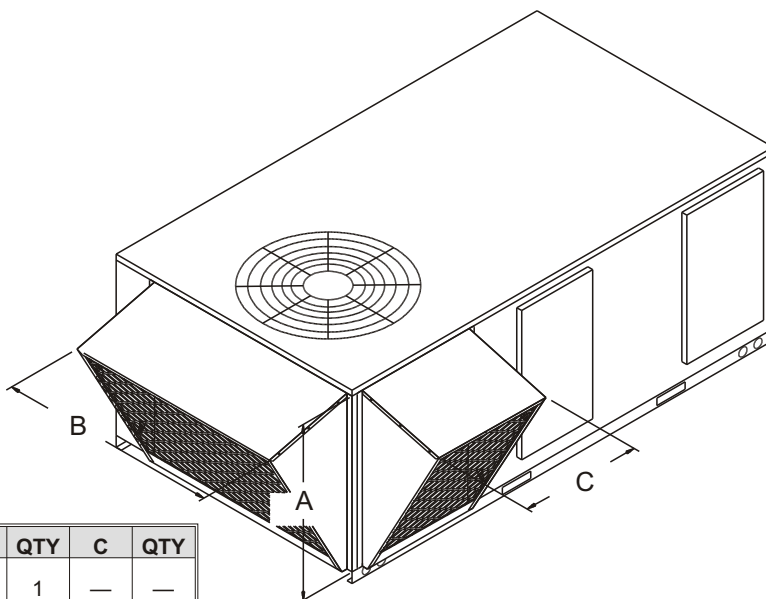
TRANE MODEL#	RSI MODEL#	A	B	QTY	C	QTY
YCD 103C, 120B TCD 103C	70-801-09-2	44 ½	53	1	—	—
YCD/TCD 150C WCD 120B	70-801-09-3	44 ½	52	1	32	1

RSI MODEL#: 70-805-09 HAIL GUARD

The RSI Hail Guard is made of 18 gauge expanded steel with a hood painted to match unit. Mounting hardware is field provided.

Notes:

1. Hail guards are shipped knocked down.
2. **Caution when installing be sure not to puncture condenser coil.**



TRANE MODEL#	RSI MODEL#	A	B	QTY	C	QTY
YCD 103C, 120B TCD 103C	70-805-09-2	43 ½	51	1	—	—
YCD/TCD 150C WCD 120B	70-805-09-3	43 ½	50	1	30	1