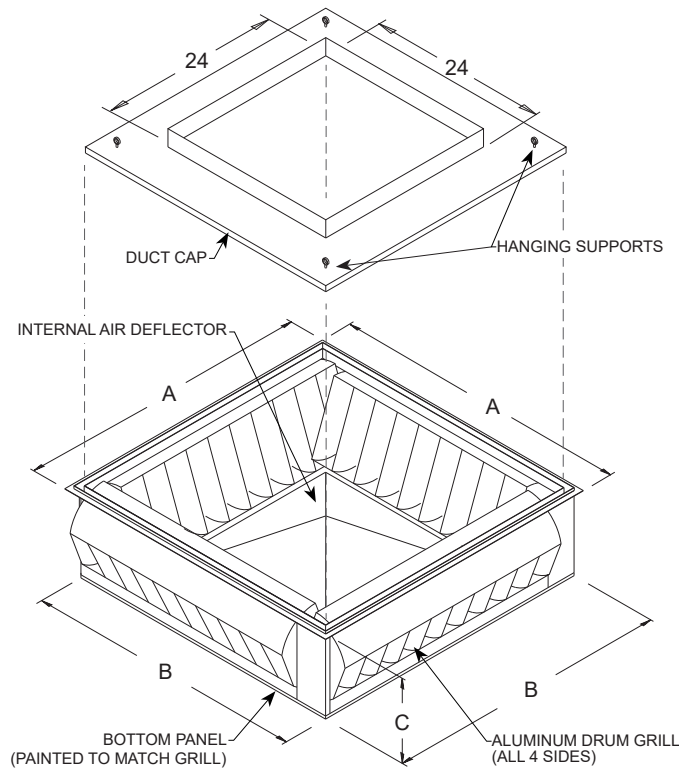


Application

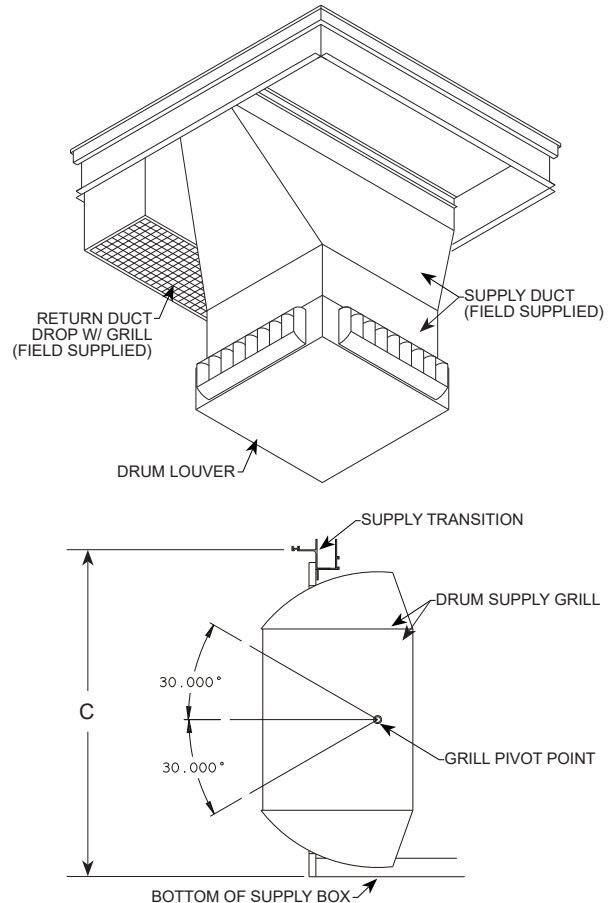
The Ruskin Rooftop Systems 575 series supply diffuser systems are designed to provide an air distribution system with the benefit of having directional air control. The system is ideal for open ceiling applications that need single point supply air with long throws. The Drum Louver allows you to "spot" the air where you need it most.

Features

- Lightweight aluminum construction
- Drum louver diffusers for high installations
- Internal precision tuned 575 air deflector (standard)
- **Built in duct cap with hanging duct supports**
- **Painted white grills**



Typical Installation



Recommended Specification

Drum Louver diffuser shall be aluminum construction and provide minimum 30 degree vertical adjustment with full horizontal blade adjustment to deliver single point supply air for large space applications. Manufacturers published data sheet shall include CFM rating, noise, static, and throw information. Drum louver shall be in all respects equivalent to Ruskin Rooftop Systems model 575. Critical: Drum louver shall incorporate a standard 575 precision tuned internal air deflector to ensure quite even airflow to all sides with low pressure drop.

DIMENSIONAL DATA					
RRS MODEL#	A	B	C	GRILL SIZE	WEIGHT
90-575-201024B	29.625	27.500	13.000	20 x 10	53 LBS

ENGINEERING DATA									
RRS MODEL#	CFM	30° DEFLECTION			0° DEFLECTION			GRILL COLOR	DUCT CAP
		NOISE	STATIC	THROW	NOISE	STATIC	THROW		
90-575-201024BS	4000-5000	<45	.420	34-37	<40	.29	40-45	WHITE	INCLUDED

NOVEMBER 12, 2020 FORM# RRS_90575201024

SUPERSEDES: 04-03-20