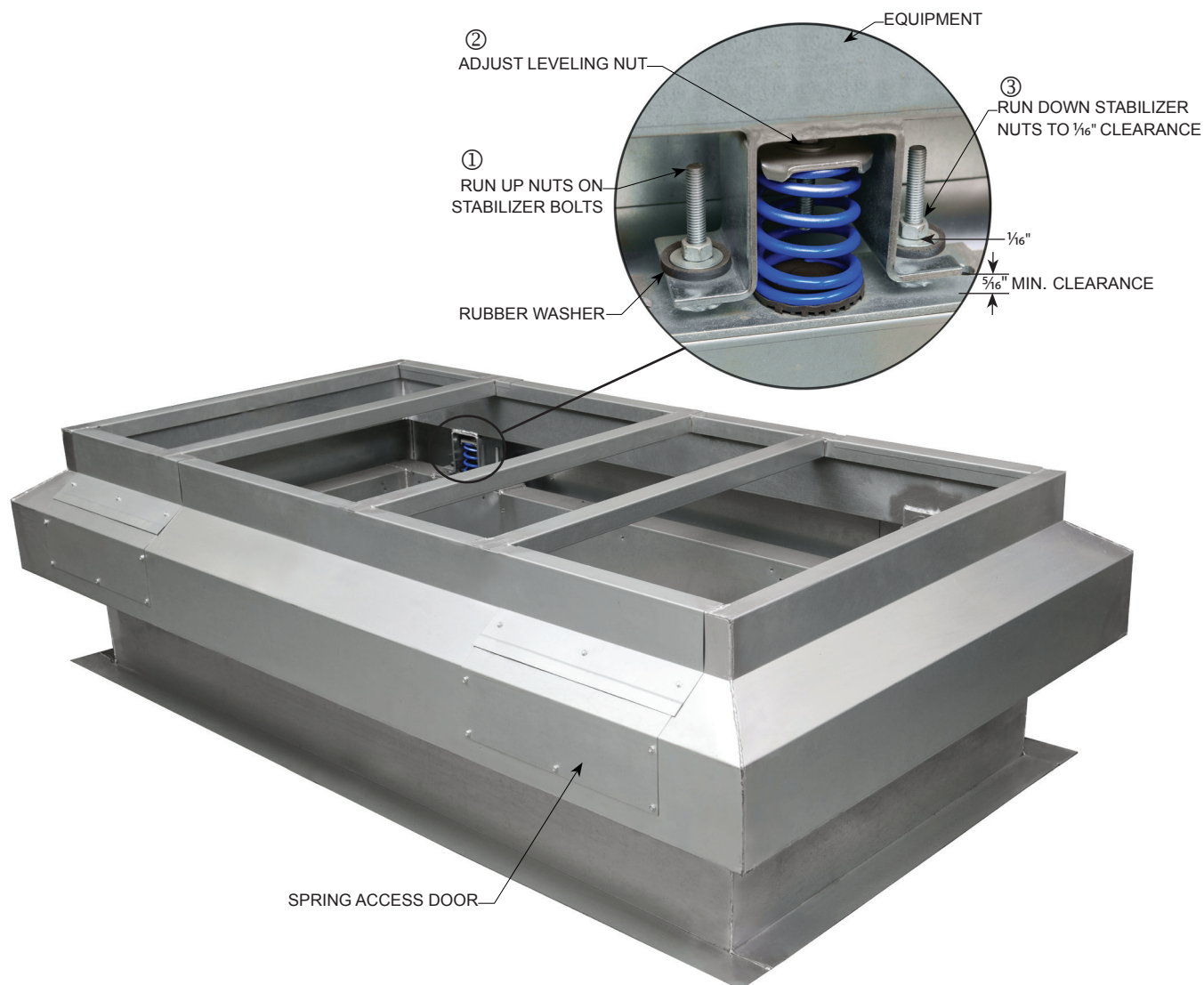


1. Before installing roof curb, ensure that curb is located so that proper service clearances are maintained on the unit.
 2. Check duct opening dimensions in curb and cut hole in roof for duct openings.
 3. Set curb assembly in place over roof openings and secure to building structure per applicable codes.
 4. Install ductwork (field supplied) from building to duct supports of curb
 5. Install provided gasketing around top perimeter of curb and around duct support openings.
 6. Install rooftop unit on top of curb
 7. Remove all spring access doors on spring housing.
 - ① Run up the two stabilizer nuts to the top of the stabilizer bolts.
 - ② Adjust the leveling nut on each isolator to level the equipment and distribute the load as evenly as possible, allowing $\frac{5}{16}$ " minimum clearance above the base plate.
 - ③ Run down the stabilizer nuts until there is $\frac{1}{16}$ " clearance above the rubber washer on each stabilizer bolt.
- Note: Stabilizer nuts alone must not be used to level equipment.**
8. Replace spring access doors and continue standard rooftop unit installation.



SEPTEMBER 28, 2016 FORM# RRSIVICRB01

SUPERSEDES: NONE