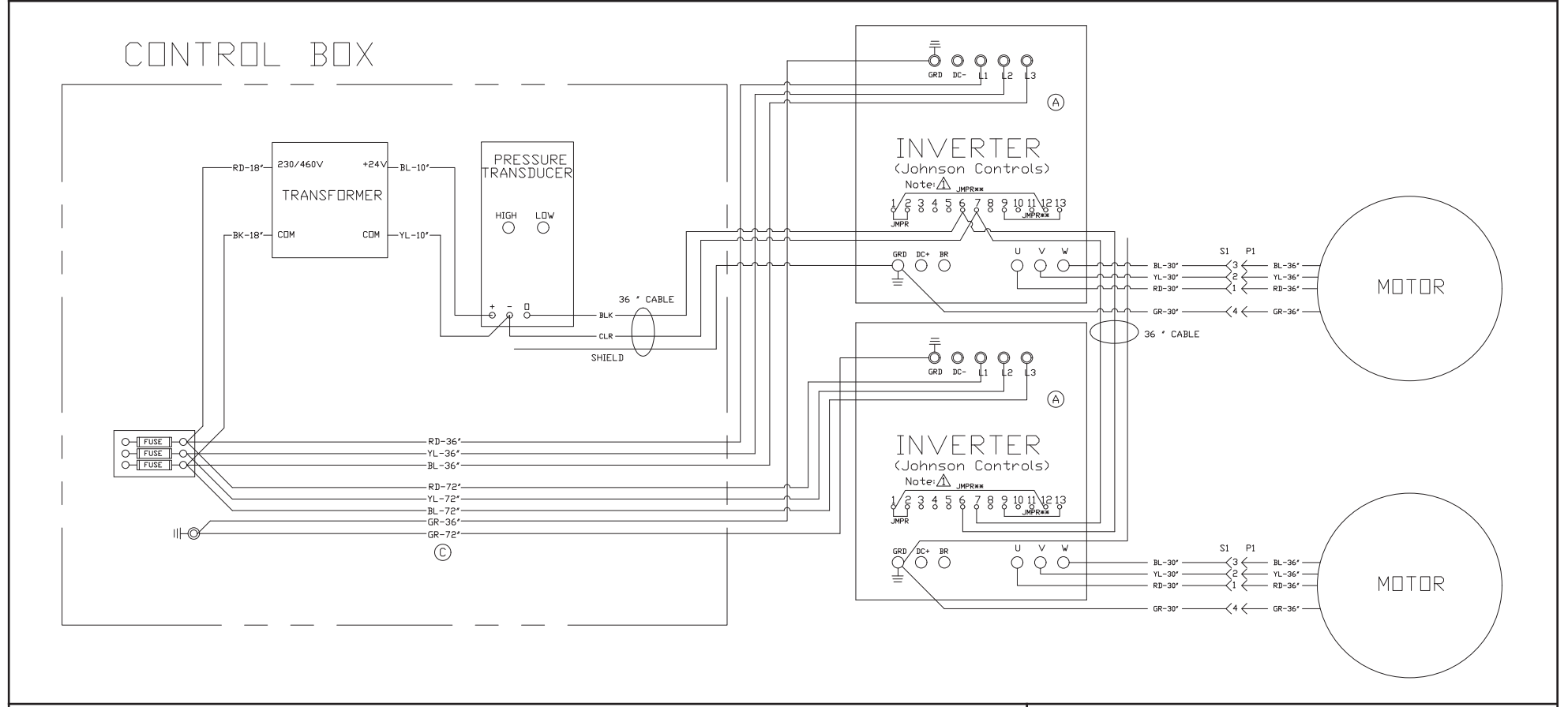


MATERIALS LIST				
QTY			RSI PART#	DESCRIPTION
-23	-33	-43		
18"	18"	18"	300000091	Wire 18 Ga. Red
240"	240"	240"	300000103	Wire 14 Ga. Red
240"	240"	240"	300000105	Wire 14 Ga. Yellow
240"	240"	240"	300000106	Wire 14 Ga. Blue
240"	240"	240"	300000107	Wire 14 Ga. Green
6'	6'	6'	300000116	Cable-Shielded
1	1	1	300000153	Fuse Holder
3	-	-	300000158	Fuse 15 AMP
-	-	3	300000163	Fuse 6 AMP
-	3	-	300000172	Fuse 9 AMP
1	1	-	300000196	Transformer
-	-	1	300000197	Transformer
1	1	1	300000256	Pressure Transducer
1	1	1	300000259	Probe - Static Pressure
2	2	2	300000329	Blower - 12A x 12A Belt
8	8	8	300000582	Ring Grd.
7	7	7	300000585	Female 1/4" Quick Disc. (Insul)
2	2	2	300000586	Female 1/4" Quick Disc. (Red)
18	18	18	300000588	Spade - 16/14 Ga. Wire
1'	1'	1'	300000998	Tape - Electrical
-	2	-	300001217	Inverter
2	-	-	300001260	Inverter
-	-	2	300001266	Inverter
18"	18"	18"	30018319	Wire 18 Ga. Black
10"	10"	10"	30018420	Wire 18 Ga. Blue
10"	10"	10"	30018718	Wire 18 Ga. Yellow
2	2	2	30303906	AMP 4 Cir Plug Conn. Male
2	2	2	30303907	AMP 4 Cir Cap Conn. Female
8	8	8	30303912	AMP Pin Contact Male
8	8	8	30303913	AMP Socket Contact Female
10	10	10	380431695	Wire Ties - 3 3/4" L
1	1	1	38177700	Ground Screw
2	2	2	410430063	V-Belt - 42"
-	-	2	610431474	Motor - 1 1/2 HP 1725 RPM
2	2	-	610431671	Motor - 1 1/2 HP 1725 RPM
2	2	2	700000037	Pulley - 10" Dia. x 1" Bore
2	2	2	700000045	Pulley - 4.75" Dia. x 5/8" Bore

CONNECTOR & CONTACT CONFIGURATION				COMPONENT CODE		WIRE COLOR CODE		Revision	Change	Date	
P1	PLUG	30303903	PIN	30303912	FB	Fuse Block	BLK / BK	Black	A	Added Note 2	07-28-05
P2	PLUG	30303903	PIN	30303912	FM	Fan Motor	BL	Blue	B	Changed wire length on S2	09-08-05
S1	CAP	30303904	SOCKET	30303913	GRD	Ground	GR	Green	C	Changed to 2 VFD design	09-15-10
S2	CAP	30303904	SOCKET	30303913	P1/P2	Fan Plug Male	ORG	Orange	D	ECN 6122	02-21-12
					S1/S2	Control Box Female	RD	Red	E	ECN 6211	05-29-12
							YL	Yellow	F	Changed fuse size in mat'l list	03-20-13
									G	ECN 8684	03-20-18
									H	Changed motor from 610431466	03-26-19



Notes:

1. Be sure all leads from motor have been covered with tape.
2. Line voltage is provided through a power source separate from the rooftop unit or from the load side of the rooftop unit disconnect.
3. JMPR ## - For 575V units only.

Power Exhaust for York International
DM/DH 240-300 / DJ/DR 180-300 / BQ 240

RRS ROOFTOP SYSTEMS

1625 Diplomat Drive
Carrollton, Texas 75006
Phone (972) 247-7447
Fax (972) 243-0940

Date: March 26, 2019
Supersedes: 03-20-18
Drawn by:
Unit # 80-457-18xA-23/33/43
Diagram# 45718AW
Approved by: