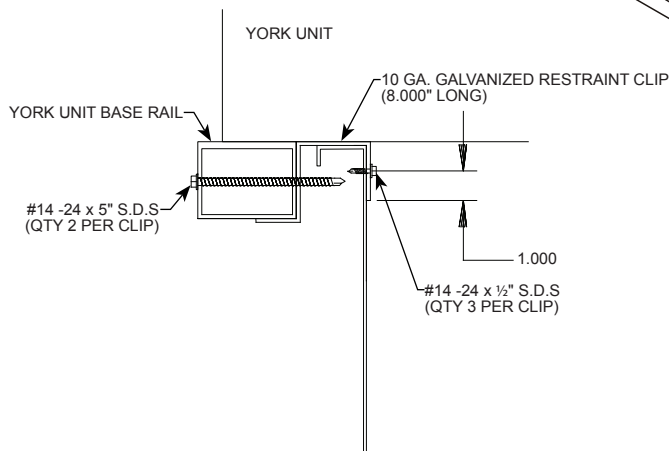
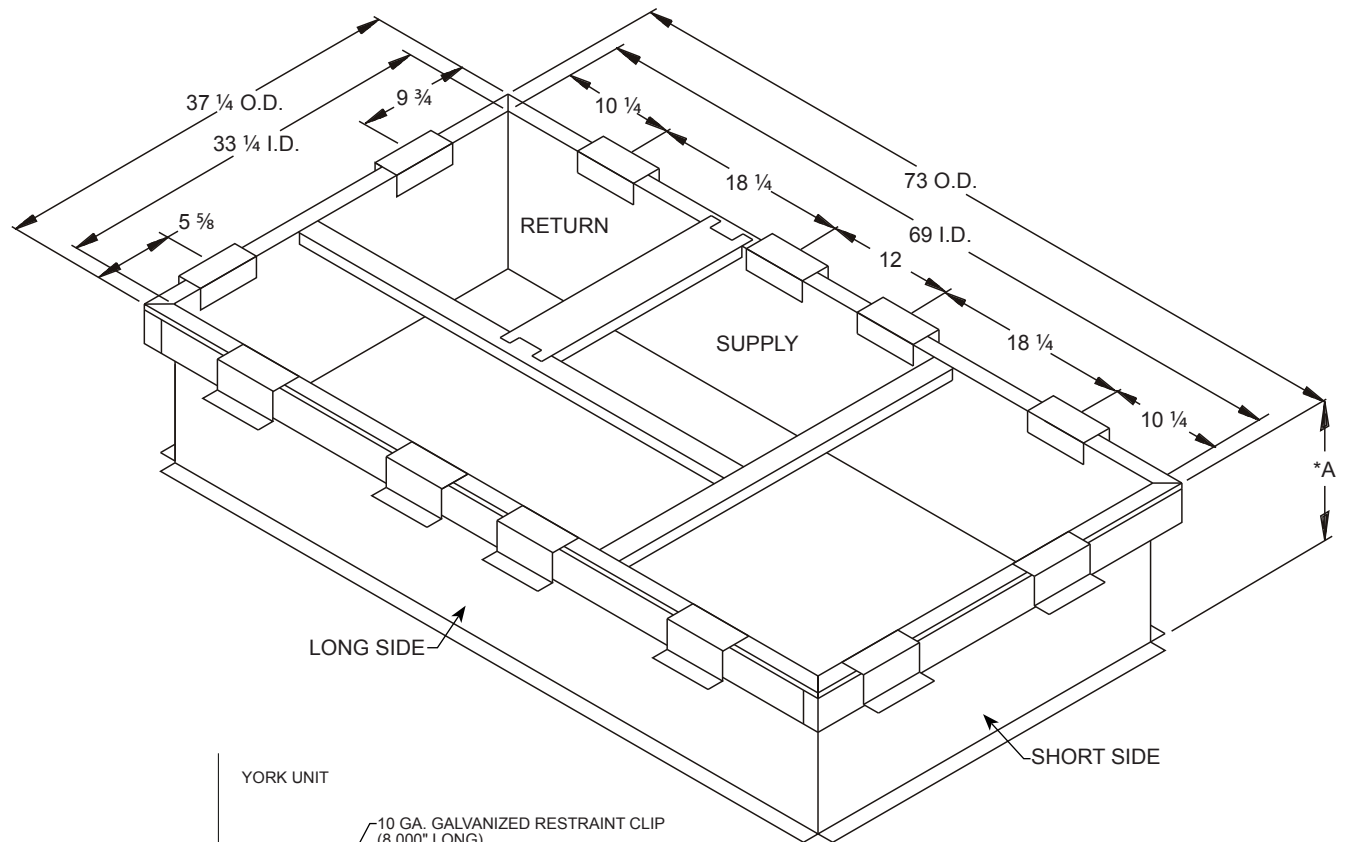


**U.S. PATENT 5148647  
RRS MODEL#: 80-265-13\*\*  
"HINGE" ROOF CURB W/ WIND LOAD RESTRAINTS**

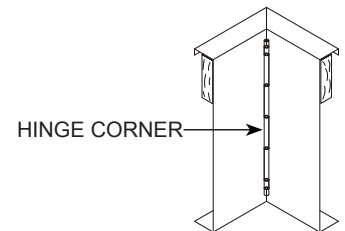
**Features:**

1. Roof curb is built to NRCA standards.
2. Roof curb is constructed of 14 gauge G90 steel.
3. Unit duct supports are provided.
4. Full perimeter 2 x 4 wood nailer.
5. Curbs are shipped unassembled.
6. Hinge pin is constructed of 1/4" galvanized steel.

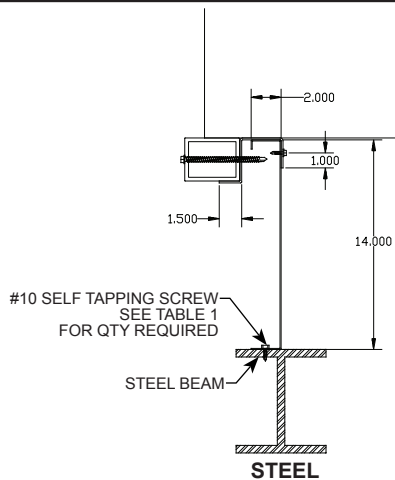
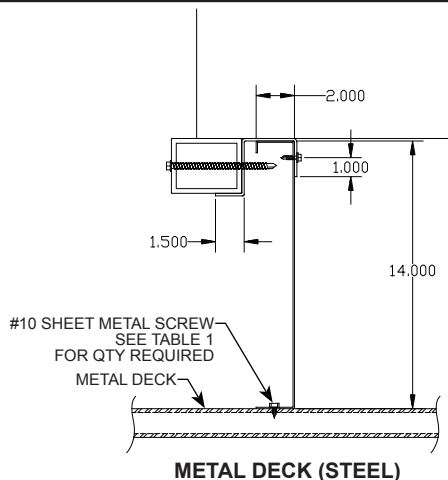
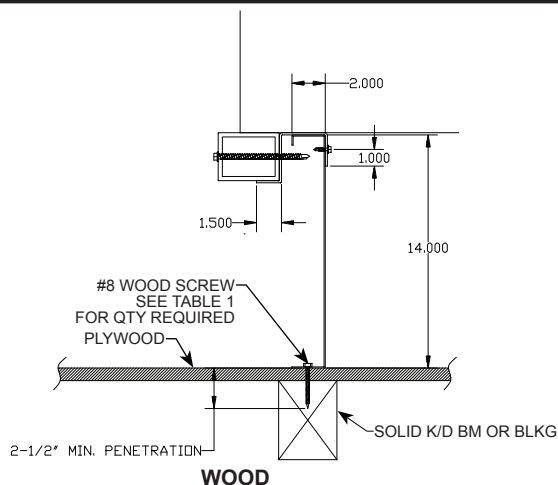
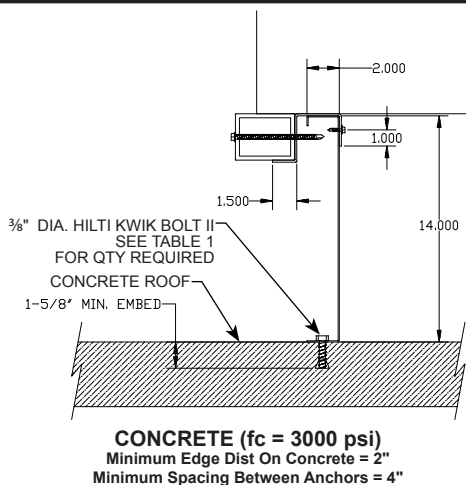
DIMENSIONS	
RRS MODEL#	*A
80-265-1314	14
80-265-1318	18



**Duct Sizes Are:**  
Return 19 x 19  
Supply 19 x 19  
**Roof Opening:**  
45" Long  
33" Wide



### Roof Curb Attachment Detail



### Seismic Restraints & Curb Design Criteria

1. The curb design has been reviewed for the ZF/ZJ/ZR/ZY/XP 036-072 for a wind load of 100 PSF per the requirements of the 2007 FBC including the 1.5 overturning moment factor. To determine if this loading adequate for the actual site conditions consult the structural drawing notes for roof wind pressure notes in the structural drawings package. If this information is not available please consult engineering for guidance.
2. Cold-formed curb framing members shall conform to the material and identification requirements of the latest "Specifications for the Design of Cold-Formed Steel Structural Members" of the American Iron and Steel Institute with a minimum  $F_y = 33$  ksi and a minimum  $F_u = 38$  ksi.
3. This review and approval for the requirements of the FBC is limited to RRS Model# 80-265-13\*\*.
4. When installing curbs on a metal roof deck, attachment screws must enter bar joists or other structure with a minimum thickness of  $\frac{1}{8}$ ". If curb cannot be placed under the roof deck additional support framing must be placed over the roof metal with a minimum metal thickness of  $\frac{1}{8}$ ". The additional support and its anchors shall be designed by an engineer qualified in the installation jurisdiction.

RRS Model#	Height (A)	Internal Curb Dimensions		Material	Fasteners Spacing	No. of Fasteners on Each Side of Curb	
		Length	Width			Long Side	Short Side
80-265-1314	14"	69.00	33.25	Wood	4.5"	16	8
				Concrete	10"	7	4
80-265-1318	18"			Steel	7"	10	5